

# ISD-630 Red Lake Falls SAFE ROUTES TO SCHOOL EXECUTIVE SUMMARY

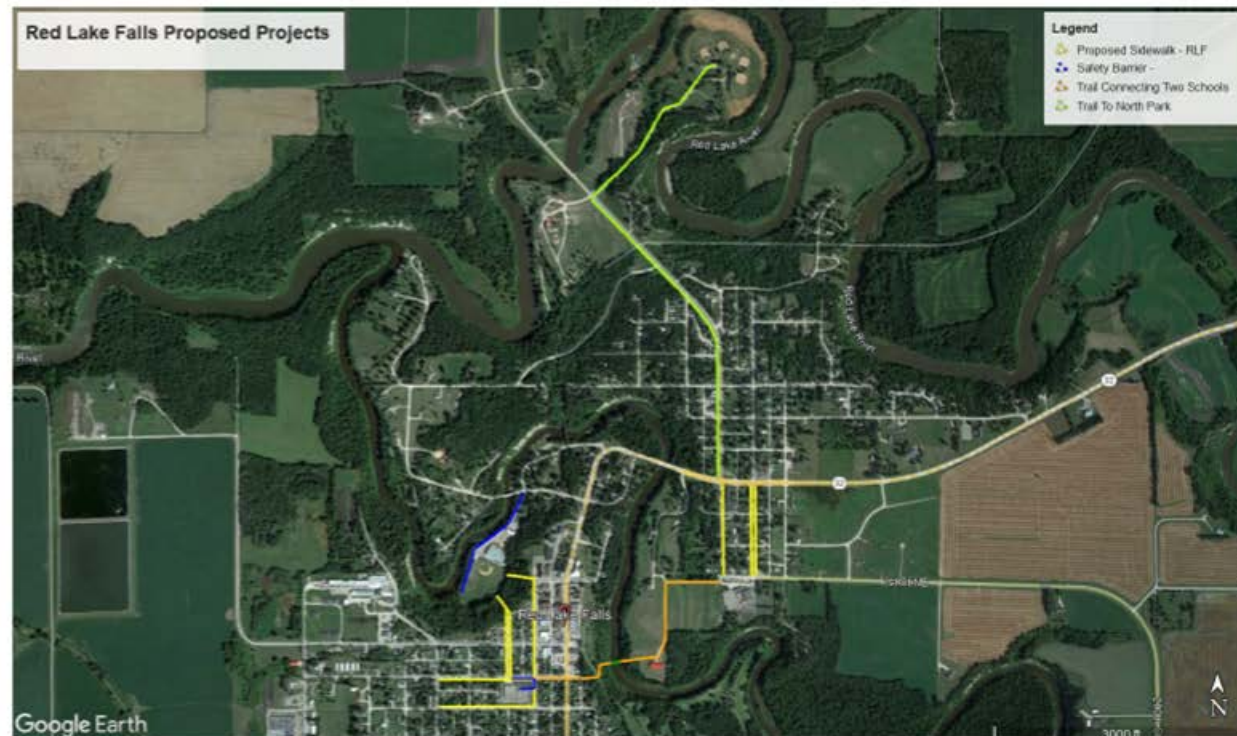


*A plan to make walking and biking to school a safe, fun activity*

## Infrastructure *Engineering projects that improve streets and routes*

### INFRASTRUCTURE RECOMMENDATIONS

- A - 1: First Street NE - Create a bypass east of the J.A. Hughes location.
- A-2: Hamilton Avenue Sidewalk - Connect the sidewalk on Hamilton Ave. to the elementary school building.
- B - Broadway Extension To School Property - Create a walking, biking, and rolling path from the end of Broadway Ave. to the school's north parking lot.
- C - Barrier Between School and 4th St.- Install a fence or other type of barrier between Lafayette School and 4th St. SW.
- D -1: Community & School Sports Complex - Safety Barriers Along The Red Lake River - Safety barriers are needed near the complex along the Red Lake River to protect vehicles and pedestrians.
- D-2: State Ave. To The Community & School Sports Complex - Sidewalk & Trail - Install a sidewalk and trail from Lafayette School to the sports complex.
- E - Trail Along County Road 13 - Establish a trail from Highway 32 north on County 13 continuing into the school sports area and ballpark fields north of town.



F - Trail And Bridge Connecting The Two Schools- Establish a trail on the southwest side of J.A. Hughes Elementary to the river. Create a new bridge across that will connect to 4th St